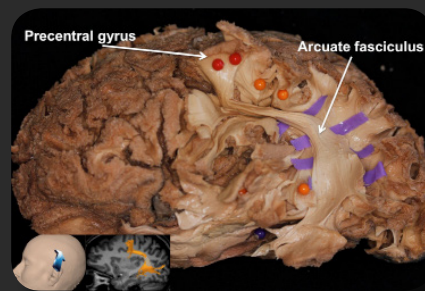
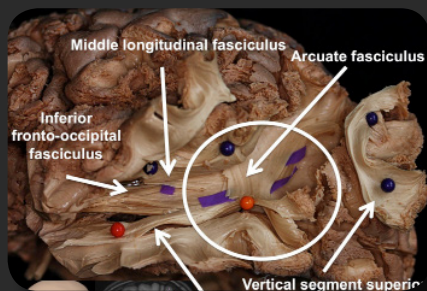
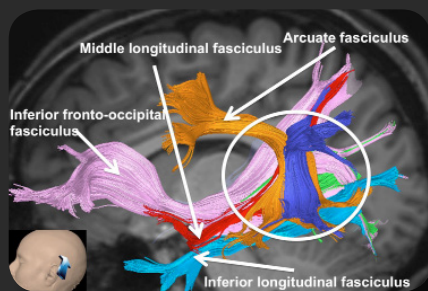


SECOND ANNUAL WHITE MATTER TRACTS DISSECTION COURSE IN GLIOMA SURGERY

FOR CONSULTANT NEUROSURGEONS

12-13 MARCH 2018
ANATOMY DISSECTION ROOMS
IMPERIAL COLLEGE LONDON, CHARING CROSS CAMPUS
LONDON, UK



HANDS-ON DISSECTIONS

CORTICOSPINAL TRACT - ARCUATE FASCICULUS
IFOF - UNCINATE FASCICULUS
SLF-MLF-ILF - OPTIC TRACT - ASLANT TRACT
INSULA - SAGITTAL STRATUM

BRAIN MAPPING PARADIGMS

LATERAL ASPECT
INFEROMEDIAL ASPECT

SURGICAL TECHNIQUES

TECHNOLOGIES
VESSEL PRESERVATION
INSULAR TUMOURS

IMAGING ANATOMY

TRACTOGRAPHIC ANATOMY OF WHITE MATTER

NEUROPATHOLOGY UPDATE

INTERACTIVE HANDS-ON NEUROPATHOLOGY MODULE
MOLECULAR CLASSIFICATION OF GLIOMAS

SECOND ANNUAL WHITE MATTER TRACTS DISSECTION COURSE IN GLIOMA SURGERY

FOR CONSULTANT NEUROSURGEONS

12-13 MARCH, 2018
ANATOMY DISSECTION ROOMS
IMPERIAL COLLEGE LONDON, CHARING CROSS CAMPUS
LONDON, UK

PROGRAM

MONDAY 12 MARCH

08:00 - 08:20	Registration & Coffee
08:20 - 08:30	GS - Introduction to day 1
08:30 - 09:00	GR - 3D lecture Anatomy of gyri/sulci
09:00 - 11:00	GR - Hands-on Lab - gyri/sulci of brain
11:00 - 11:30	JM - 3D lecture Anatomy of white matter tracts of lateral aspect of brain
11:30 - 13:00	JM /GS/MC - Hands-on Lab - Lateral aspect of brain SLF/AF
13:00-13:30	Working lunch - Challenging case discussion
13:30 - 15:00	JM /GS/MC - Hands-on Lab - Lateral aspect of brain MLF/IML/INSULA/FIBRE INTERSECTION AREA
15:00 - 16:00	GS - Mapping paradigms - Lateral aspect of brain
16:00-17:00	MC - DTI anatomy and function of SLF/AF/MLF/ILF/INSULA
20:00 - 23:00	Dinner with the Faculty Bills Restaurant, Hammersmith

TUESDAY 13 MARCH

08:00 - 08:20	Coffee
08:20 - 08:30	GS - Introduction to day 2
08:30 - 09:00	GR - 3D lecture Craniocerebral relationships
09:00 - 10:30	GR - Hands-on Lab - Craniocerebral relationships
10:30 - 10:45	JM - Lecture Anatomy of white matter tracts of inferomedial aspect of brain
10:45 - 12:30	JM /GS/MC - Hands-on Lab - Inferomedial aspect of brain CINGULUM/ASLANT TRACT/CENTRAL CORE
12:30-13:00	Working lunch - Insula surgery
13:00 - 14:30	JM /GS /MC - Hands-on Lab - Inferomedial aspect of brain SUBCALLOSAL FASCICULUS/CORTICOSPINAL TRACT/CENTRAL CORE
14:30 - 15:00	GS - Mapping paradigms - Inferomedial aspect of brain
15:00 - 15:30	SB - Update; molecular classification of gliomas
15:30-16:00	SB - Hands-on, interactive neuropathology module (please bring your laptop)
16:00-17:00	MC - DTI anatomy and function of CINGULUM/FRONTAL ASLANT TRACT/ SUBCALLOSAL FASCICULUS

FACULTY



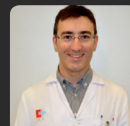
GEORGE SAMANDOURAS - COURSE DIRECTOR
Consultant Neurosurgeon
The National Hospital for Neurology and
Neurosurgery, Queen Square
London, UK



MARCO CATANI - COURSE DIRECTOR
Professor, Neuroanatomy & Psychiatry
NatBrainLab
King's College London
London, UK



GUILHERME RIBAS
Professor of Surgery
Department of Neurosurgery
Univeristy of Sao Paolo
Brazil



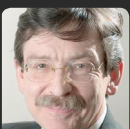
JUAN MARTINO
Consultant Neurosurgeon
University Hospital Marqués de Valdecilla
Satander, Spain



KEVIN O'NEILL
Consultant Neurosurgeon
Department of Neurosurgery
Charing Cross Hospital
London, UK



LEWIS THORNE
Consultant Neurosurgeon
The National Hospital for Neurology and
Neurosurgery, Queen Square
London, UK



DAVID CERI DAVIES
Chair in Anatomy
Faculty of Medicine
Imperial College London
London, UK



SEBASTIAN BRANDNER
Professor and Chair of Neuropathology
The National Hospital for Neurology and
Neurosurgery, Queen Square
London, UK